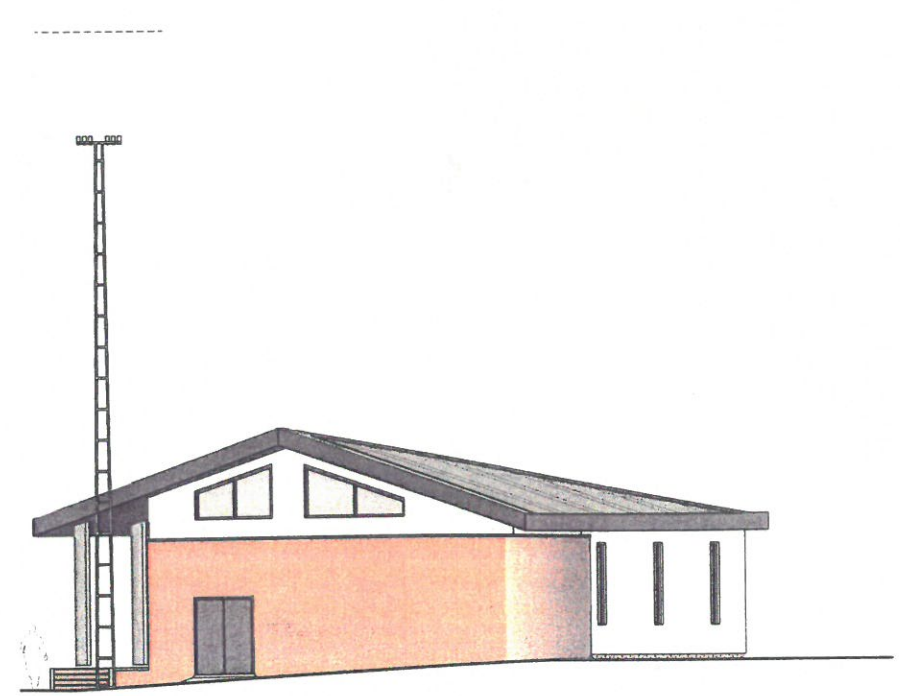
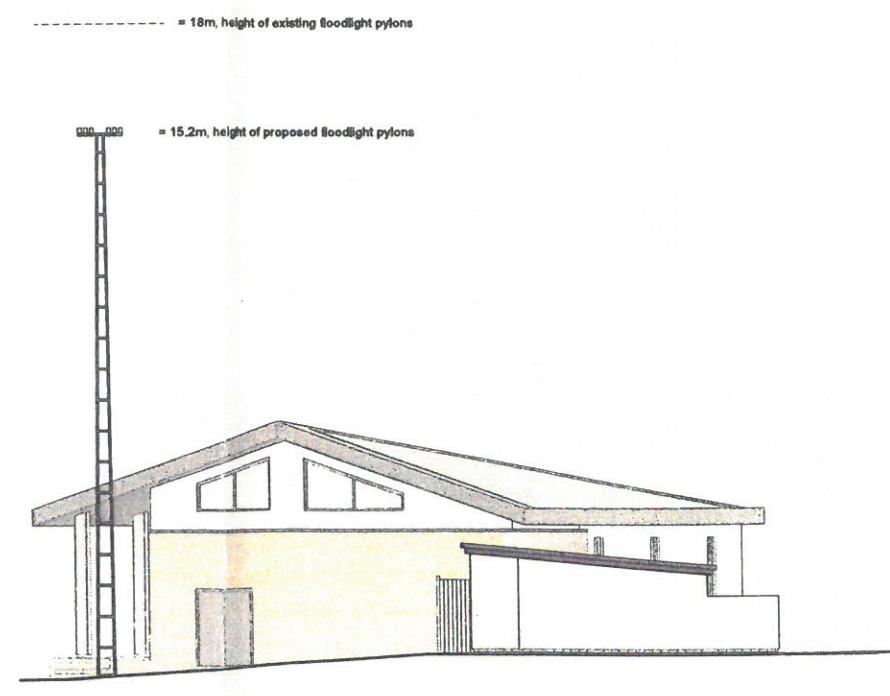


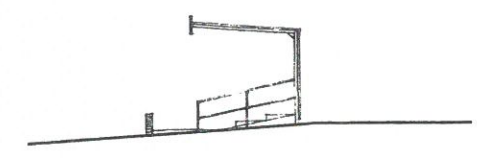
Proposed West Elevation
1:100 @ A1, 1:200 @ A3



Proposed North Elevation 1 - Clubhouse Only
1:100 @ A1, 1:200 @ A3



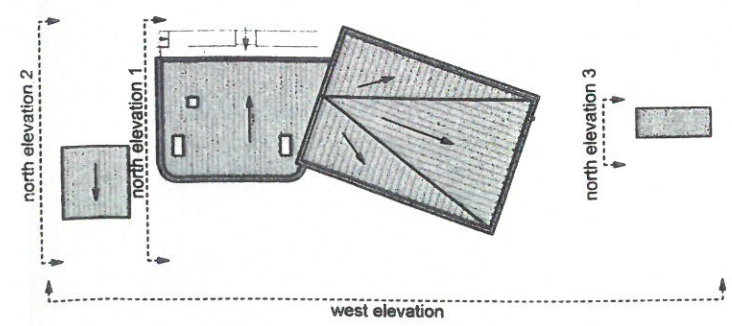
Proposed North Elevation 2 - Garage in foreground
1:100 @ A1, 1:200 @ A3



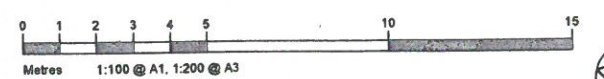
Proposed North Elevation 3 - Grandstand
1:100 @ A1, 1:200 @ A3

	Red brick - stretcher bond		Powder coated aluminium doors and windows
	Self-coloured render		Timber fencing panels
	Metal standing seam light grey roofing		Square-edged concrete columns
	Sarnafil single ply roofing		

Proposed Material Palette



Proposed Elevation Key
Not to Scale



REV C - Amendments to Function Room Block - 180710 - CA
 RevB - 10.02.17 - Added double doors into plant room onto North Elevations 1 & 2 - JH
 RevA - 03.02.17 - Edited material palette descriptions, added floodlight pylons & moved garage east to accommodate waste storage - JH

TITLE 1894.0 Minehead Football Club, The Recreation Ground, Imham Road, Minehead
 DRAWING NUMBER & REVISION 1894.0/310C
 DATE July 2018
 SCALE 1:100 @ A1, 1:200 @ A3
 DRAWN CA
 THE POTATO STORE WITHTYCOMBE MINEHEAD SOMERSET TA24 6QB
 QUEENSGATE HOUSE 48 QUEEN STREET EXETER DEVON EX4 3SR
 T: 01984 640988 T: 01392 260490